

HAVEN

NEWSTEAD

Project Update
23rd September 2015



PROJECT UPDATE – SEPTEMBER 2015



Haven Newstead is a 25 story, 223 residential apartment and high end retail complex, located in the suburb of Newstead, in Brisbane QLD. The development is a mixture of luxury apartments, Sky Homes and a retail complex. Haven Newstead offers superior apartments and lifestyle to its residents - and is strategically located in a thriving suburb less than 3 kms to the Brisbane CBD and on the Brisbane River.

ICON CO

ICON CO CONSTRUCTION

Haven is being built by Icon Co. Established in 1997, ICON has been behind many of the leading award-winning high-rise buildings in New South Wales and Victoria and have a commitment to quality. ICON's parent company has 150-year track record with a \$6 billion balance sheet, providing a long term commitment to stand behind their workmanship.



JAMES ST

RL57 RETAIL PARTNER

Arguably the number one retail developer and manager in Australia, RL57 knows how to attract top brands and unique new operators. Their vision creates an environment that is much more than a retail store. HCAP sought out John James of RL67 to become a partner within Haven's retail precinct and create a new version of James St just for Haven and its residents.



PROJECT UPDATE – SEPTEMBER 2015



HAVEN
NEWSTEAD

Date: 23/09/2015

Prepared by: Marquee Projects

Project Address: 63 Skyring Terrace, Newstead

Practical Completion Date: April 2017

Settlement Date: May 2017

Project Update

Since commencing on site in April 2015, Icon are now 6 months into construction of Haven. The months of August and September have allowed works to progress well with minimal wet weather, assisting the bulk earthworks. Icon have also completed the retaining wall system and associated capping beams and rock anchors which were an arduous activity, necessary to stabilize the ground conditions while excavation occurs.

The tower crane was also erected which eases the pressures on logistics in and around the confined site. Materials can now be efficiently loaded from the Cunningham Street frontage onto the site without impacting the ongoing activities.

Icon are continuing to form and install the reinforcement and services in the remaining ground floor pile caps. Due to the size and complexity of these foundation caps, these activities will continue through to the end of September. Bulk excavation will also continue throughout September followed by commencement piling platform at Basement 2 level.

The Haven development has also received a new commercial neighbor with Ferrari recently opening its doors to a new showroom in Energex House, adjacent to the Haven site. Located on a prime corner location in the heart of Newstead, the Ferrari showroom is one of many businesses establishing business in the precinct including the new Bank of Queensland Headquarters and Red chip Lawyers. The recent wave of new development reiterates Newstead's transformation into a highly desirable precinct.



HCAP
DEVELOPMENTS



Haven Site: The tower crane was delivered to site in several pieces and erect over the course of a weekend.

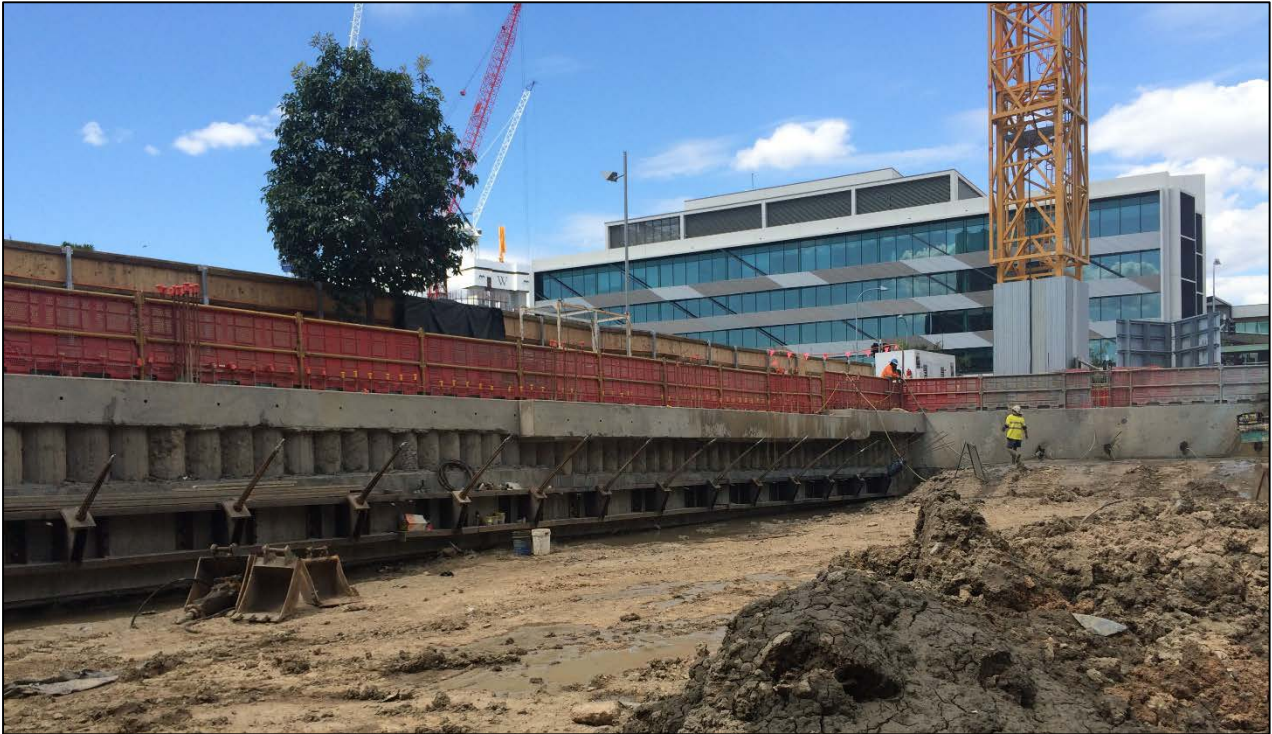


Haven Site: Icon's tower crane is commonly referred to as a 'hammerhead crane' which includes a fixed jib (crane arm). Nearby developments are utilizing 'luffing cranes' that can navigate over nearby obstructions and adjoining developments.

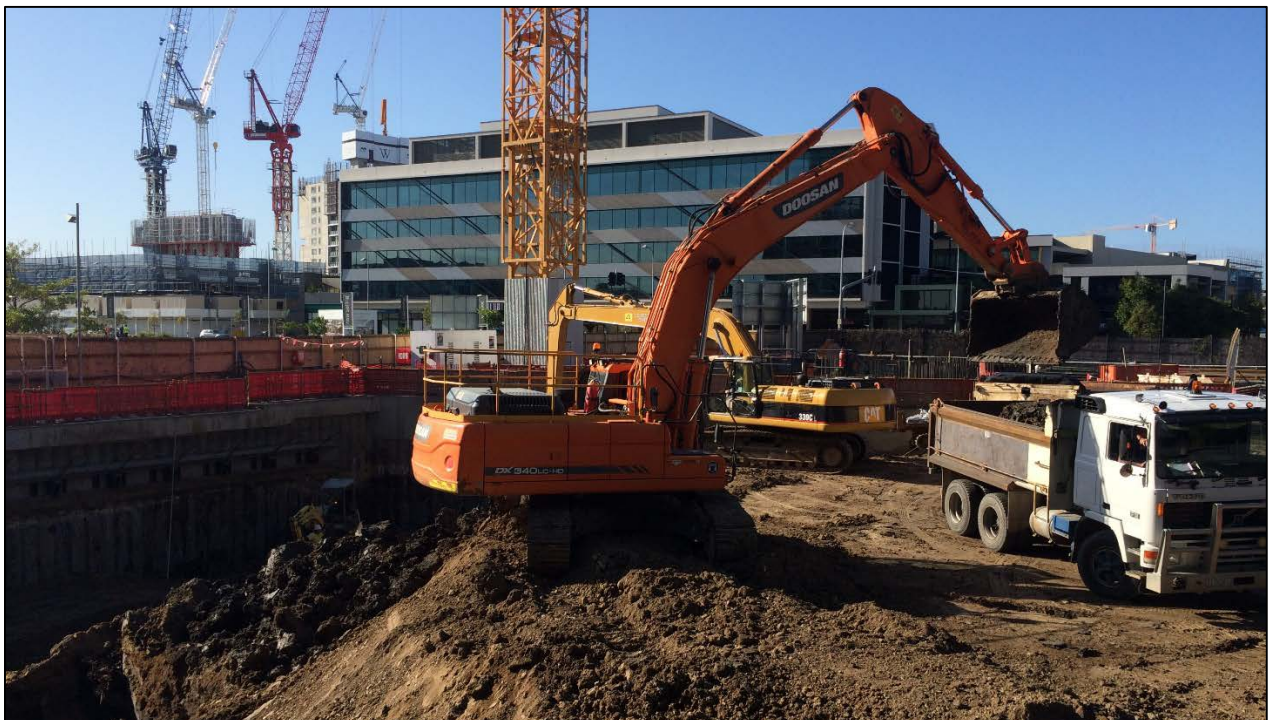
PROJECT UPDATE – SEPTEMBER 2015



HAVEN
NEWSTEAD



Haven Site: Retaining wall system complete with rock anchors extending 50 under neighboring streets.



Haven Site: With retaining walls secure, bulk excavation commences.

HCAP
DEVELOPMENTS



Haven Site: The development team are installing cameras to provide live photography of the construction process. Access will be available via the Haven website in the coming weeks.

www.havenapartments.com.au