

# HAVEN

NEWSTEAD

Project Update  
17<sup>th</sup> December 2015



# PROJECT UPDATE – December 2015



Haven Newstead is a 25 story, 223 residential apartment and high end retail complex, located in the suburb of Newstead, in Brisbane QLD. The development is a mixture of luxury apartments, Sky Homes and a retail complex. Haven Newstead offers superior apartments and lifestyle to its residents - and is strategically located in a thriving suburb less than 3 kms to the Brisbane CBD and on the Brisbane River.

## ICON CO

### ICON CONSTRUCTION

Haven is being built by Icon Co. Established in 1997, ICON has been behind many of the leading award-winning high-rise buildings in New South Wales and Victoria and have a commitment to quality. ICON's parent company has 150-year track record with a \$6 billion balance sheet, providing a long term commitment to stand behind their workmanship.



## JAMES ST

### RL57 - RETAIL PARTNER

Arguably the number one retail developer and manager in Australia, RL57 knows how to attract top brands and unique new operators. Their vision creates an environment that is much more than a retail store. HCAP sought out John James of RL67 to become a partner within Haven's retail precinct and create a new version of James St just for Haven and its residents.



# PROJECT UPDATE – December 2015



**HAVEN**  
NEWSTEAD

Date: 17/12/12015

Prepared by: Marquee Projects

Project Address: 63 Skyring Terrace, Newstead

Practical Completion Date: April 2017

Settlement Date: May 2017

## Project Update

- Icon have completed their construction work for the year on program and achieving their targets of completing the foundations and basement 2 slab.
- December work also included propping of formwork for the basement 1 slab and establishment of the jump form which will cast the lift and stair wells for the remaining tower.
- 2015 final works will expedite progress when construction recommences in early January 2016. The key targets for January 2016 include completion of basement levels and the ground floor retail slab.
- The Haven Sales Display is set to be removed at the end of January, with only a handful of apartments remaining.

## Kingsford Smith Drive upgrade: Brisbane City Council signs \$650m contract

Brisbane City Council has signed the contract for its \$650 million Kingsford Smith Drive Upgrade project and announced Lendlease as its chosen tender. Kingsford Smith Drive is a major road linking the Brisbane CBD to the Brisbane Airport, and directly passes the Gasworks Precinct and Haven Apartments. Haven residents will enjoy upgraded bikeways and walking paths connected to nearby amenity-rich precincts.



**HCAP**  
DEVELOPMENTS

# PROJECT UPDATE – December 2015



**HAVEN**  
NEWSTEAD

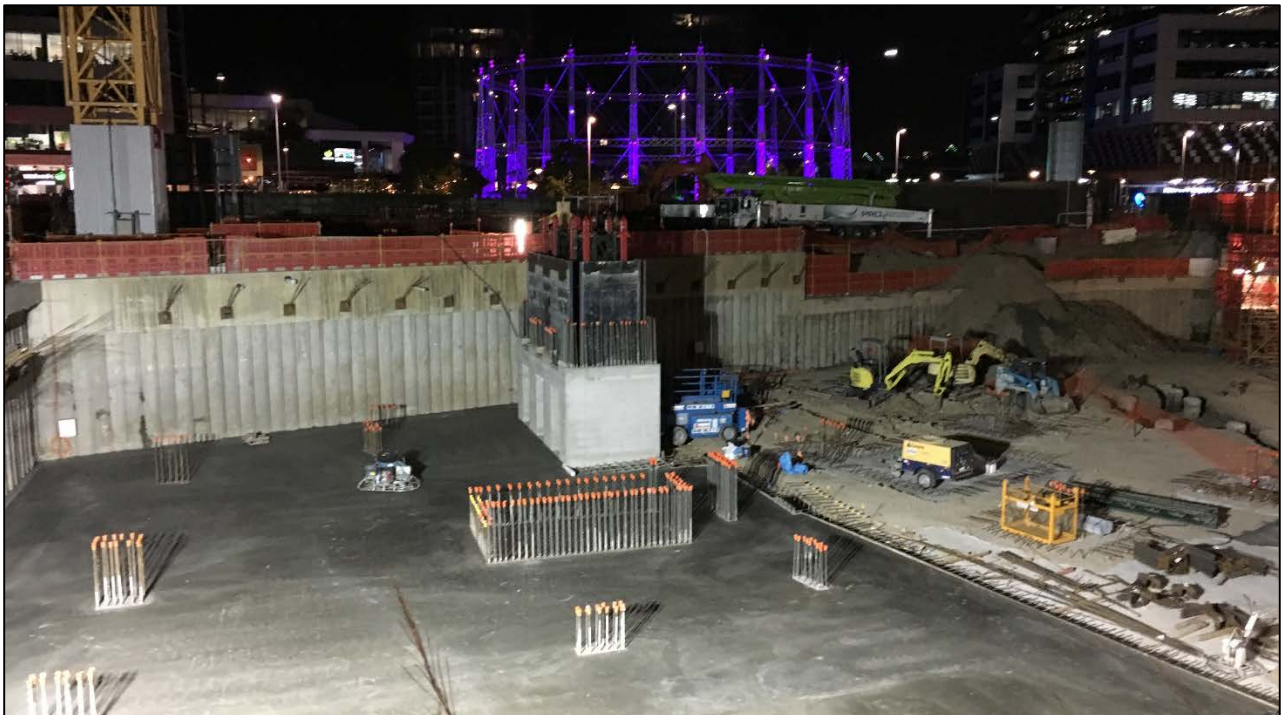
The Kingsford Smith Drive Upgrade project will include:

- Upgrade Kingsford Smith Drive to three lanes each way, with tree-lined boulevard creating a subtropical entry into Brisbane from the airport;
- A new RiverWalk and segregated cycle path connecting Bretts Wharf to the existing network of river walkways throughout Newstead and Tenerife;
- Significant new riverside destinations at Bretts Wharf and Cameron Rocks Reserve, easily accessible via public transport;
- Continuous footpaths on both sides of the road with improved footpath widths; and
- Dedicated on-road cycle lanes.

Construction of the Kingsford Smith Drive upgrade is expected to start in 2016 and be completed in 2019.

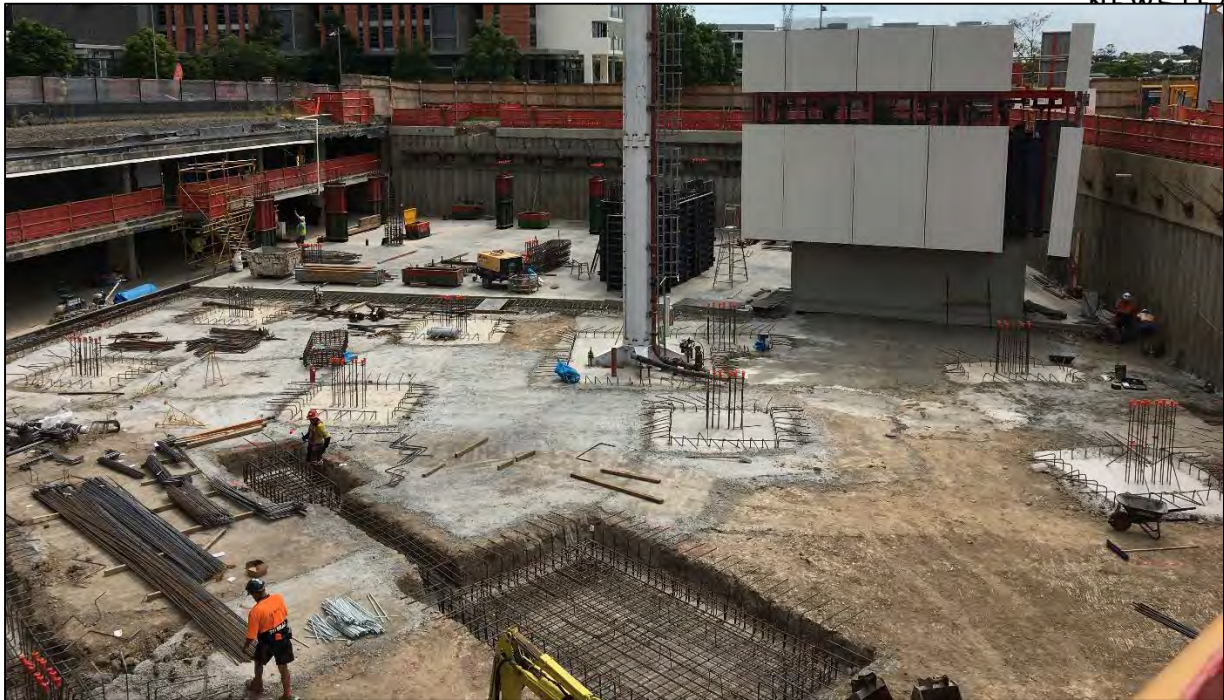


## Site Progress

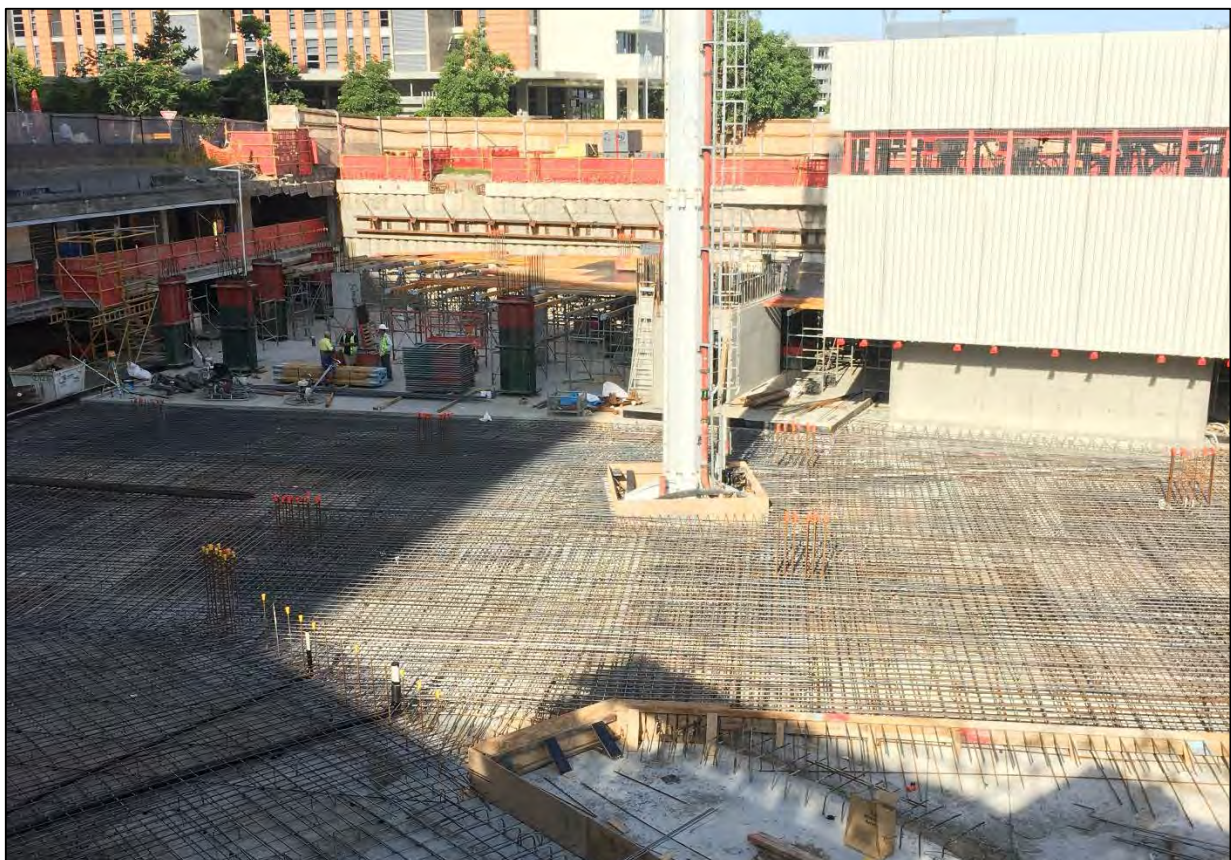


Haven Site: The first section of basement 2 slab has been poured and the lift well is now visible.

**HCAP**  
DEVELOPMENTS



Haven Site: Steel reinforcing for the basement foundations is finalised.



Haven Site: The second section of basement 2 slab is prepared with steel reinforcing.



Haven Site: The jump form system is established around the lift well and formwork is prepared for the basement column supports.



Haven Site: Formwork is prepared for the Basement 1 slab pour scheduled for January 2016.



Haven Site: Construction Progress 1<sup>st</sup> December 2015



Haven Site: Construction Progress 17<sup>th</sup> December 2015