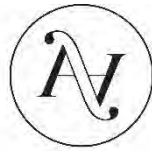


# AUGUST - 2017 PROJECT UPDATE

---



CENTRAL ELEMENT  
PROPERTY DEVELOPMENT



AURA

PYMBLE

**H**CAP  
DEVELOPMENTS



# SUMMARY

---

| Service Fit-off |              |
|-----------------|--------------|
| Building A      | 30% Complete |
| Building B      | 50% Complete |
| Building C      | 70% Complete |
| Bathroom Tiling |              |
| Building A      | 90% Complete |
| Building B      | 95% Complete |
| Building C      | 95% Complete |
| Kitchen Joinery |              |
| Building A      | 5% Complete  |
| Building B      | 10% Complete |
| Building C      | 80% Complete |

Aura's brick facade was completed in May, additional façade work such as; render, panel cladding, painting and glass balustrades is nearing completion too. Scaffolding has now been dropped on Building B and C - a great milestone for the project as it allows external works to begin.

Internal fit-out continues to progress steadily. Tiling to bathrooms is almost complete throughout with most of the fixtures such as basins and toilets installed in building C and B. Internal base coat of paint has been applied throughout with second coat being applied to building C & B. Carpentry to windows and skirting is mostly complete throughout.

As the months progress, with the below photos we can see the development progressively looking more like the CGI's. In the following months timber flooring, bathrooms joinery and shower screens will begin to be installed. Externally; shade structures, awnings, pergolas, vergolas and verticals louvres will begin to appear.

We look forward to reporting next month on the status of your new homes.

Kind Regards,

The Central Element & HCAP Developments Team

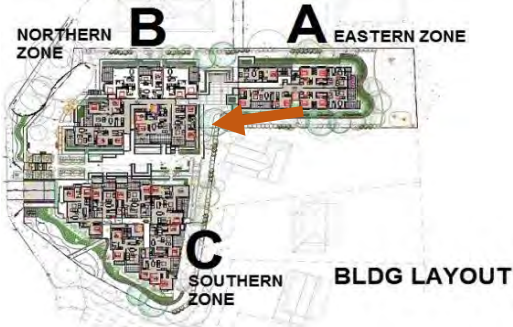
---

To receive more frequent project updates, search Instagram for [@auradevelopment](#) or click the hyperlink to go direct.

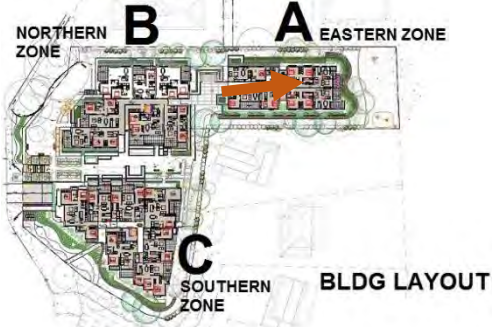


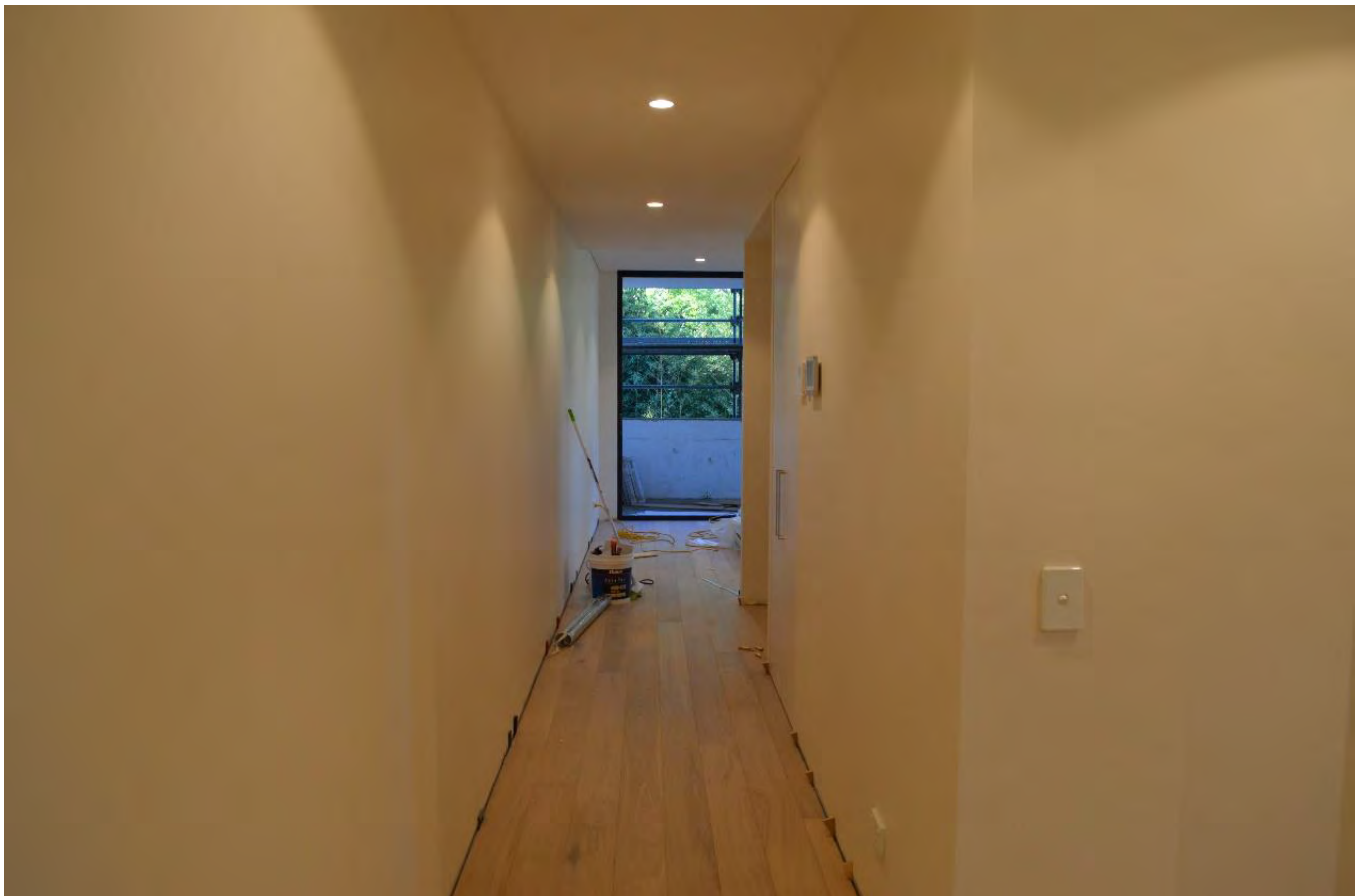



# CONSTRUCTION PHOTOS

|                     |  |
|---------------------|--|
| Date                | 02/08/17   |
| Building            | A  |
| Level               | 7  |
| Description         | View towards building C and B, scaffolding dropped, balustrade installed   |
| Location and Aspect |  <p>NORTHERN ZONE <b>B</b> <b>A</b> EASTERN ZONE<br/>SOUTHERN ZONE <b>C</b> BLDG LAYOUT</p> |




|                     |  |
|---------------------|--|
| Date                | 02/08/17   |
| Building            | A  |
| Level               | 1  |
| Description         | Benchmark unit flooring installation   |
| Location and Aspect |  <p>NORTHERN ZONE <b>B</b> <b>A</b> EASTERN ZONE<br/><b>C</b> SOUTHERN ZONE <b>BLDG LAYOUT</b></p> |



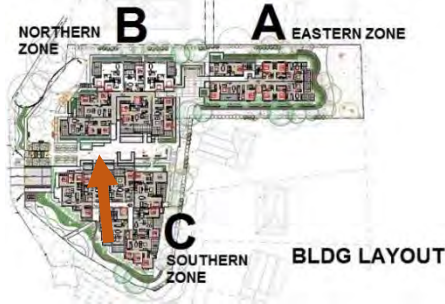
|                     |  |
|---------------------|--|
| Date                | 02/08/17   |
| Building            | C  |
| Level               | 5  |
| Description         | Bathroom works, mirror cabinet and shower screen to be installed imminently        |
| Location and Aspect |  |





|                     |  |
|---------------------|--|
| Date                | 02/08/17   |
| Building            | C  |
| Level               | 6  |
| Description         | Bedroom joinery installation, view to the south.                                   |
| Location and Aspect |  |



|                     |  |
|---------------------|--|
| Date                | 02/08/17   |
| Building            | C  |
| Level               | 7  |
| Description         | Kitchen joinery installation   |
| Location and Aspect |  |

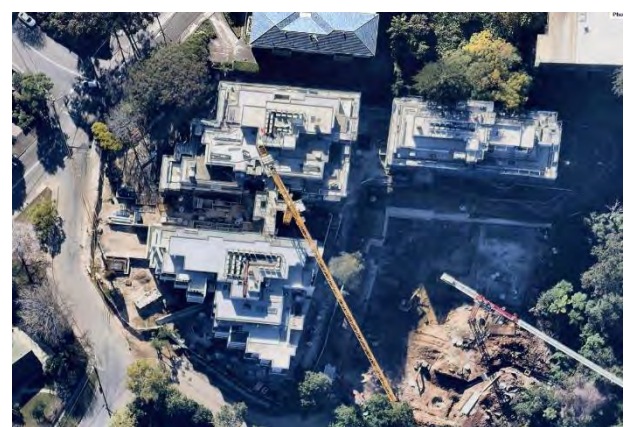
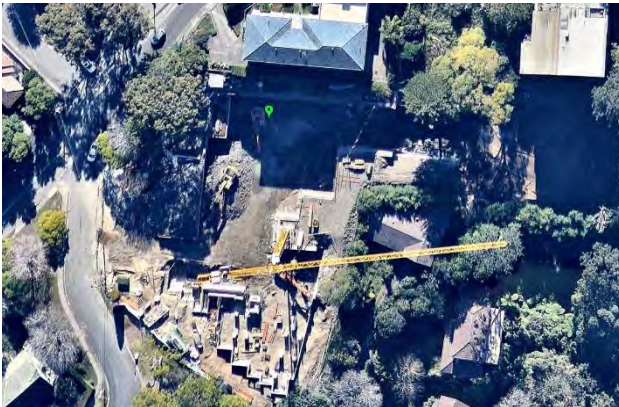




# TIME-LAPSE

---

The time-lapse below shows great progress since project start date. From 3 residential dwellings, to excavation, to 3 complete structures.





# AERIAL CONSTRUCTION VIEW

## 28-07-2017

---



# AURA ELEVATE YOUR LIFESTYLE

---

Elevate your lifestyle and your expectations. Aura at Pymble sits majestically on an elevated site which takes in a magnificent 270-degree vista of Sydney, from Chatswood's towers to the CBD's sparkling lights, right through to the Blue Mountains. The panoramic views will take your breath away, the stunning modern architectural design will impress, and the timeless luxurious interiors will inspire. Step up to an indulgent way of living with a bird's eye view at Aura.



Aura apartments feature individualised planning to optimise the use of space and take advantage of the elevated aspect, to ensure your home is truly unique. Living areas flow seamlessly to large entertainer's balconies or courtyards with outlooks that expand as you climb higher. Kitchens feature a clever blend of timber and polyurethane, and concealed lighting highlights the beauty of stone benchtops, engineered timber floors and mirrored bathroom cabinets. You'll love coming home to Aura.



# LOCATION

Aura's prized location on Pymble's hilltop offers an enviable address. Ideally located on Sydney's Upper North Shore, this quiet and leafy suburb is renowned for its stunning natural setting and is home to Sheldon Forest and Dalrymple-Hay Nature Reserve. At Aura, you're just a short stroll to local shopping, restaurants, parks, cafés and just 200 metres to Pymble train station. And the Pacific Highway/M1 puts you within easy reach of the CBD. Nearby attractions include three golf clubs, West Pymble Pool, Bobbin Head Marina, Ku-ring-gai Chase National Park, plus some of Sydney's best universities, private and state schools.

