

HAVEN

NEWSTEAD

Project Update
27th April 2017



PROJECT UPDATE – APRIL 2017



Date: 27/04/2017

Prepared by: Marquee Projects

Project Address: 63 Skyring Terrace, Newstead

Estimated Practical Completion Date: August 2017

Estimated Settlement Date: September 2017

Construction Update

- Works have recommenced on site following the scheduled site closure over the Easter Break.
- Icon have completed the first stage of the Level 22 slab pour with the second stage scheduled for next week.
- Service trades rough-in continues to trail the structural levels having progressed to Level 19.
- Ceilings and partitions, and external glazing installation have commenced on Level 18.
- Finishing trades are continuing up to Level 17.
- Prior to Easter, Icon completed pouring all structural concrete for the retail buildings including the mezzanine level, roof slab and cantilevered awnings on Skyring Terrace and Reddacliff Street.
- Icon will now begin to dismantle the ground floor scaffolding and commence installation of structural steel and window glazing for the retail tenancies.



Haven Site: City Views from Level 22.

PROJECT UPDATE – APRIL 2017

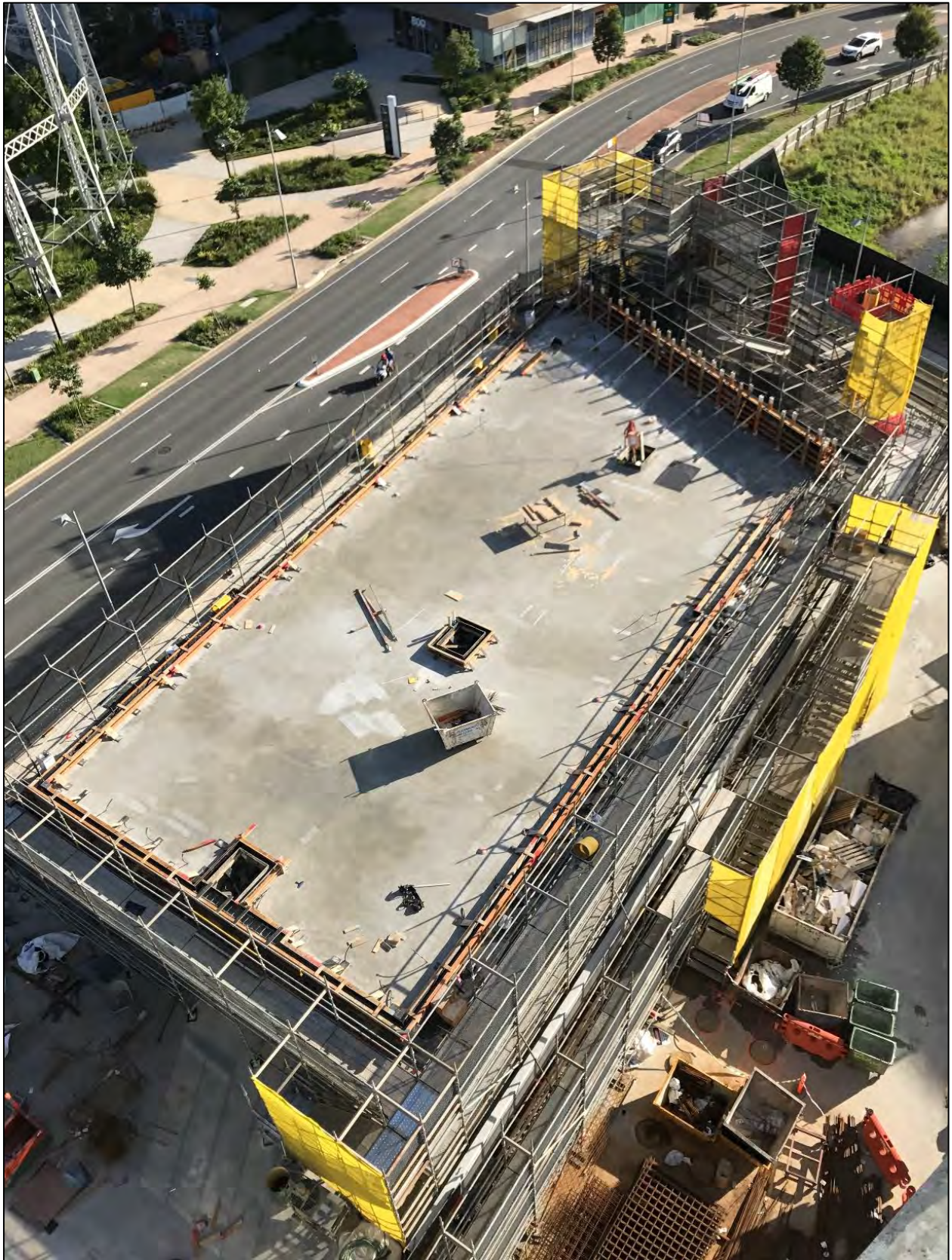


HAVEN
NEWSTEAD



Haven Site: Gasometer Views from Level 22. Construction site (bottom left) is limited to 15 Levels and will not impede city views once complete.

HCAP
DEVELOPMENTS



Haven Site: Complete rooftop of Retail Tenancies on Skyring Terrace.

PROJECT UPDATE – APRIL 2017



HAVEN
NEWSTEAD



Haven Site: Western elevation.

HCAP
DEVELOPMENTS

PROJECT UPDATE – APRIL 2017



HAVEN
NEWSTEAD



Haven Site: Eastern view from Waterfront Park.

H **CAP**
DEVELOPMENTS

PROJECT UPDATE – APRIL 2017



HAVEN
NEWSTEAD



Haven Site: 25th April 2017

HCAP
DEVELOPMENTS

PROJECT UPDATE – APRIL 2017



HAVEN
NEWSTEAD

Haven Newstead is a 25 storey, 220 residential apartment and high end retail complex, located in the suburb of Newstead, in Brisbane QLD. The development is a mixture of luxury apartments, Sky Homes and a retail complex. Haven Newstead offers superior apartments and lifestyle to its residents - and is strategically located in a thriving suburb less than 3 kms to the Brisbane CBD and on the Brisbane River.

ICON CO

ICON CONSTRUCTION

Haven is being built by Icon Co. Established in 1997, ICON has been behind many of the leading award-winning high-rise buildings in New South Wales and Victoria and have a commitment to quality. ICON's parent company has 150-year track record with a \$6 billion balance sheet, providing a long term commitment to stand behind their workmanship.



JAMES ST

RL57 - RETAIL PARTNER

Arguably the number one retail developer and manager in Australia, RL57 knows how to attract top brands and unique new operators. Their vision creates an environment that is much more than a retail store. HCAP sought out John James of RL57 to become a partner with Haven's retail precinct to deliver well-planned amenity for residents.



HCAP
DEVELOPMENTS