

AURA

PYMBLE

PROJECT UPDATE
6th of September 2016



AURA – Elevate Your Lifestyle

Elevate your lifestyle and your expectations. Aura at Pymble sits majestically on an elevated site which takes in a magnificent 270-degree vista of Sydney, from Chatswood’s towers to the CBD’s sparkling lights, right through to the Blue Mountains. The panoramic views will take your breath away, the stunning modern architectural design will impress, and the timeless luxurious interiors will inspire. Step up to an indulgent way of living with a bird’s eye view at Aura.



Aura apartments feature individualised planning to optimise the use of space and take advantage of the elevated aspect, to ensure your home is truly unique. Living areas flow seamlessly to large entertainer’s balconies or courtyards with outlooks that expand as you climb higher. Kitchens feature a clever blend of timber and polyurethane, and concealed lighting highlights the beauty of stone benchtops, engineered timber floors and mirrored bathroom cabinets. You’ll love coming home to Aura.



Aura's prized location on Pymble's hilltop offers an enviable address. Ideally located on Sydney's Upper North Shore, this quiet and leafy suburb is renowned for its stunning natural setting and is home to Sheldon Forest and Dalrymple-Hay Nature Reserve. At Aura, you're just a short stroll to local shopping, restaurants, parks, cafés and just 200 metres to Pymble train station. And the Pacific Highway/M1 puts you within easy reach of the CBD. Nearby attractions include three golf clubs, West Pymble Pool, Bobbin Head Marina, Ku-ring-gai Chase National Park, plus some of Sydney's best universities, private and state schools.



Construction Update

Photo 1 – The photo below from the 5th of September shows building B's freshly poured slab on ground. Building C in the background has formwork and reinforcement in place preparing for level 1 slab pour.



Photo 2 – The picture below taken on the 5th of September shows building A's foundation footings, 50% of the slab on ground poured in the foreground and the OSD tank poured in the background.



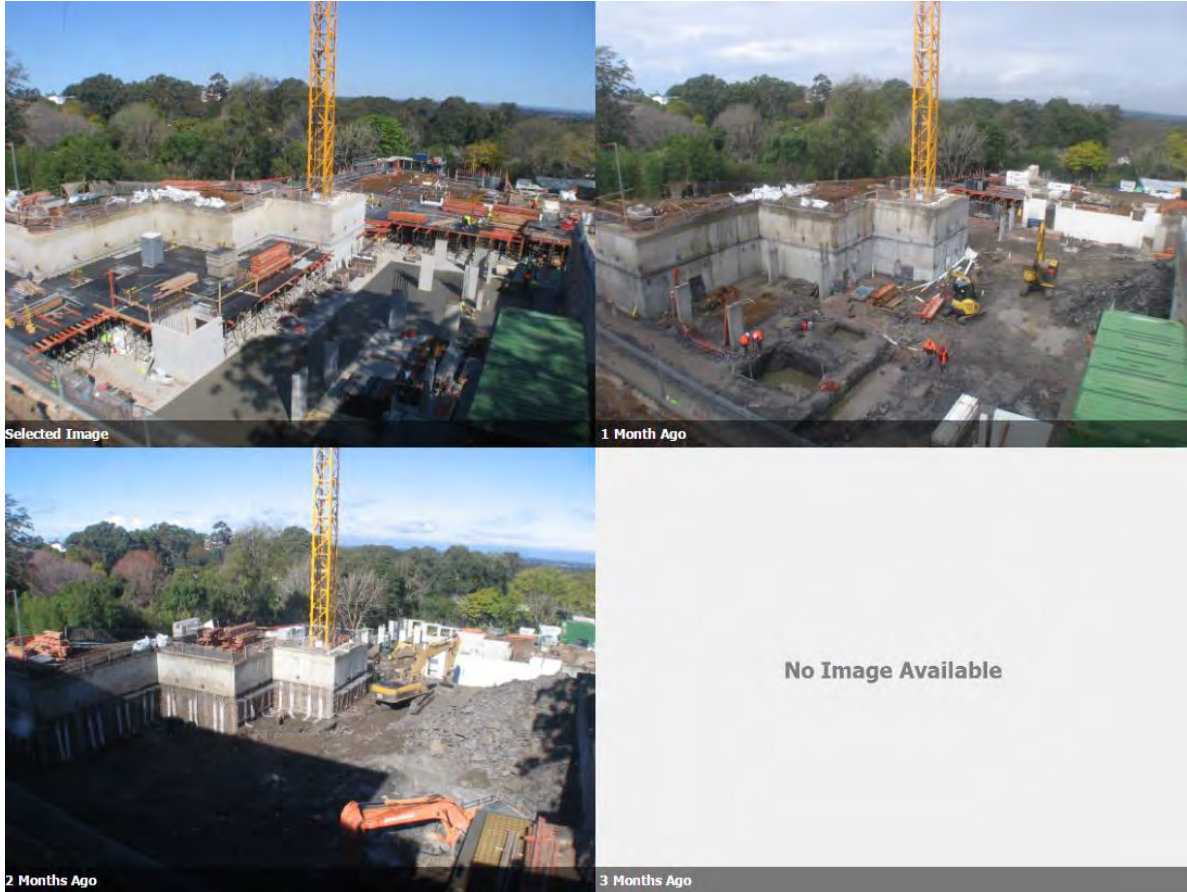
Photo 3 – The picture below from the 5th of September shows some of the formwork complete for building A and footings for building B complete.



Photo 4 – The time lapse photos below show the progress of works over the past 3 weeks



Photo 5 – The time lapse photos below show the progress of works over the past 3 months.



Summary

Since our update in August, work continues to progress well, all foundation footings are complete, shotcrete complete and 80% of the slab on ground is complete.

Building A

Imminently to have the slab on ground completed and poured, OSD & OSR tanks in the corner are now complete.

Building B

On 5th of September building B slab on ground was completed, with formwork and reinforcement for the following level commencing shortly.

Building C

Currently out of the ground with level 2 slab formwork done almost ready for concrete.

The site will be out of the ground within a few weeks

Design for the project has advanced well with the head contractor securing the majority of their major trades allowing design to be coordinated further.

We shall provide an update in October when the entire building is out of the ground and the following level formwork and concrete pours are underway.