

# HAVEN

NEWSTEAD

Project Update  
24<sup>th</sup> June 2016



# PROJECT UPDATE – June 2016



**HAVEN**  
NEWSTEAD

Haven Newstead is a 25 story, 220 residential apartment and high end retail complex, located in the suburb of Newstead, in Brisbane QLD. The development is a mixture of luxury apartments, Sky Homes and a retail complex. Haven Newstead offers superior apartments and lifestyle to its residents - and is strategically located in a thriving suburb less than 3 kms to the Brisbane CBD and on the Brisbane River.

## **ICON CO**

### ICON CONSTRUCTION

Haven is being built by Icon Co. Established in 1997, ICON has been behind many of the leading award-winning high-rise buildings in New South Wales and Victoria and have a commitment to quality. ICON's parent company has 150-year track record with a \$6 billion balance sheet, providing a long term commitment to stand behind their workmanship.



## **JAMES ST**

### RL57 - RETAIL PARTNER

Arguably the number one retail developer and manager in Australia, RL57 knows how to attract top brands and unique new operators. Their vision creates an environment that is much more than a retail store. HCAP sought out John James of RL57 to become a partner with Haven's retail precinct to deliver well-planned amenity for residents.



**HCAP**  
DEVELOPMENTS



# PROJECT UPDATE – June 2016

Date: 24/6/2016

Prepared by: Marquee Projects

Project Address: 63 Skyring Terrace, Newstead

Estimated Practical Completion Date: April 2017

Estimated Settlement Date: May 2017



## Project Update

- The months of May and June have seen the completion of the level 4 and 5 structural slabs.
- Icon have refined the sequencing of their structural trades to achieve a nine-day cycle for each level.
- Installation of petitions, glazed windows and doors has commenced on Level 1 and 2.
- Back-propping throughout the basements and ground floor has been removed with this area now utilized as storage of building materials.
- Installation of mechanical and electrical service rough-in has continued in the basement and ground floor.
- Block work walls at ground level are 50% complete revealing the layout of the resident lobby and expansive retail tenancies.
- Icon have commenced piling for the stand alone retail building fronting Skyring Terrace. Icon plan to pour the ground slab for this building by the end of June 2016.
- The Jump-form Signage has been fully installed promoting the iconic Haven development.

## Site Progress



Haven Site: Retail tenancies fronting Cunningham Street and Waterfront Park.





Haven Site: Retail tenancies fronting Cunningham Street and Waterfront Park.



Haven Site: Easterly view to Waterfront Park from the Level 5 slab. Reinforcing and services are currently being laid.





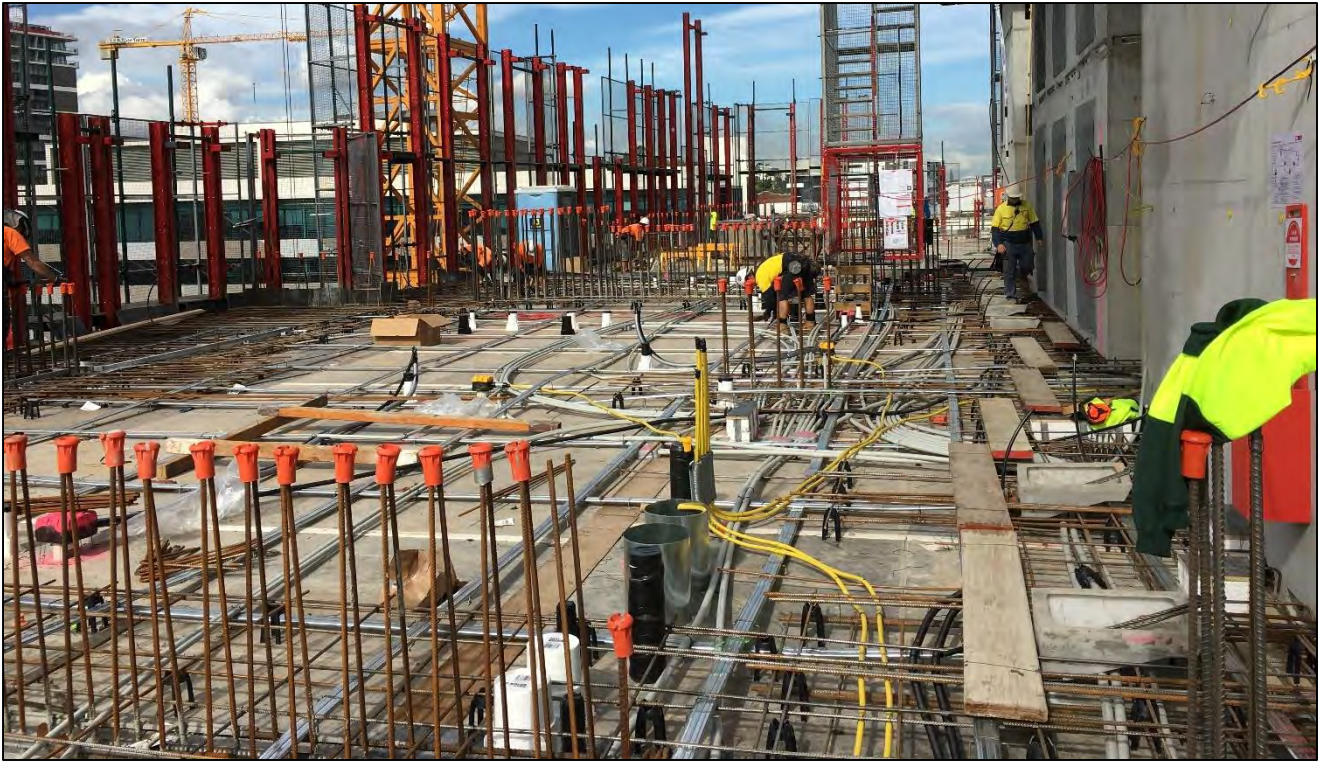
Haven Site: Easterly view to Waterfront Park from Level 5.



# PROJECT UPDATE – June 2016



**HAVEN**  
NEWSTEAD



Haven Site: Level 5 preparations for concrete slab pour.



Haven Site: Installation of glazing on Level 1.

**HCAP**  
DEVELOPMENTS



# PROJECT UPDATE – June 2016



**HAVEN**  
NEWSTEAD



Haven Site: South Western Façade 17<sup>th</sup> June 2016



Haven Site: North Western Façade 17<sup>th</sup> June 2016

**HCAP**  
DEVELOPMENTS





Haven Site: 24<sup>th</sup> June 2016