



HAVEN

NEWSTEAD

Project Update
16th May 2016



PROJECT UPDATE – May 2016



Haven Newstead is a 25 storey, 220 residential apartment and high end retail complex, located in the suburb of Newstead, in Brisbane QLD. The development is a mixture of luxury apartments, Sky Homes and a retail complex. Haven Newstead offers superior apartments and lifestyle to its residents - and is strategically located in a thriving suburb less than 3 kms to the Brisbane CBD and on the Brisbane River.

ICON CO

ICON CONSTRUCTION

Haven is being built by Icon Co. Established in 1997, ICON has been behind many of the leading award-winning high-rise buildings in New South Wales and Victoria and have a commitment to quality. ICON's parent company has 150-year track record with a \$6 billion balance sheet, providing a long term commitment to stand behind their workmanship.



JAMES51

RL57 - RETAIL PARTNER

Arguably the number one retail developer and manager in Australia, RL57 knows how to attract top brands and unique new operators. Their vision creates an environment that is much more than a retail store. HCAP sought out John James of RL57 to become a partner with Haven's retail precinct to deliver well-planned amenity for residents.



PROJECT UPDATE – May 2016



HAVEN
NEWSTEAD

Date: 16/5/2016

Prepared by: Marquee Projects

Project Address: 63 Skyring Terrace, Newstead

Estimated Practical Completion Date: April 2017

Estimated Settlement Date: May 2017

Project Update

- Icon have progressed well through April and May with structural floor slabs progressing to level 3. Level 3 walls and formwork for level 4 slab are currently underway.
- Back-propping throughout the ground floor has been removed providing an early insight into the future expanses of the premium retail offerings.
- Icon have also commenced installation of mechanical and electrical service rough-in in the basement levels.
- The Haven Project Display is currently located at on James Street, the iconic home of the Haven Retail Managers, RL57. Opening hours are from 12:00pm – 3:00pm, Monday to Sunday at 5/65 James Street, Fortitude Valley (adjoining Sixes & Sevens Restaurant and Bar).

Site Progress

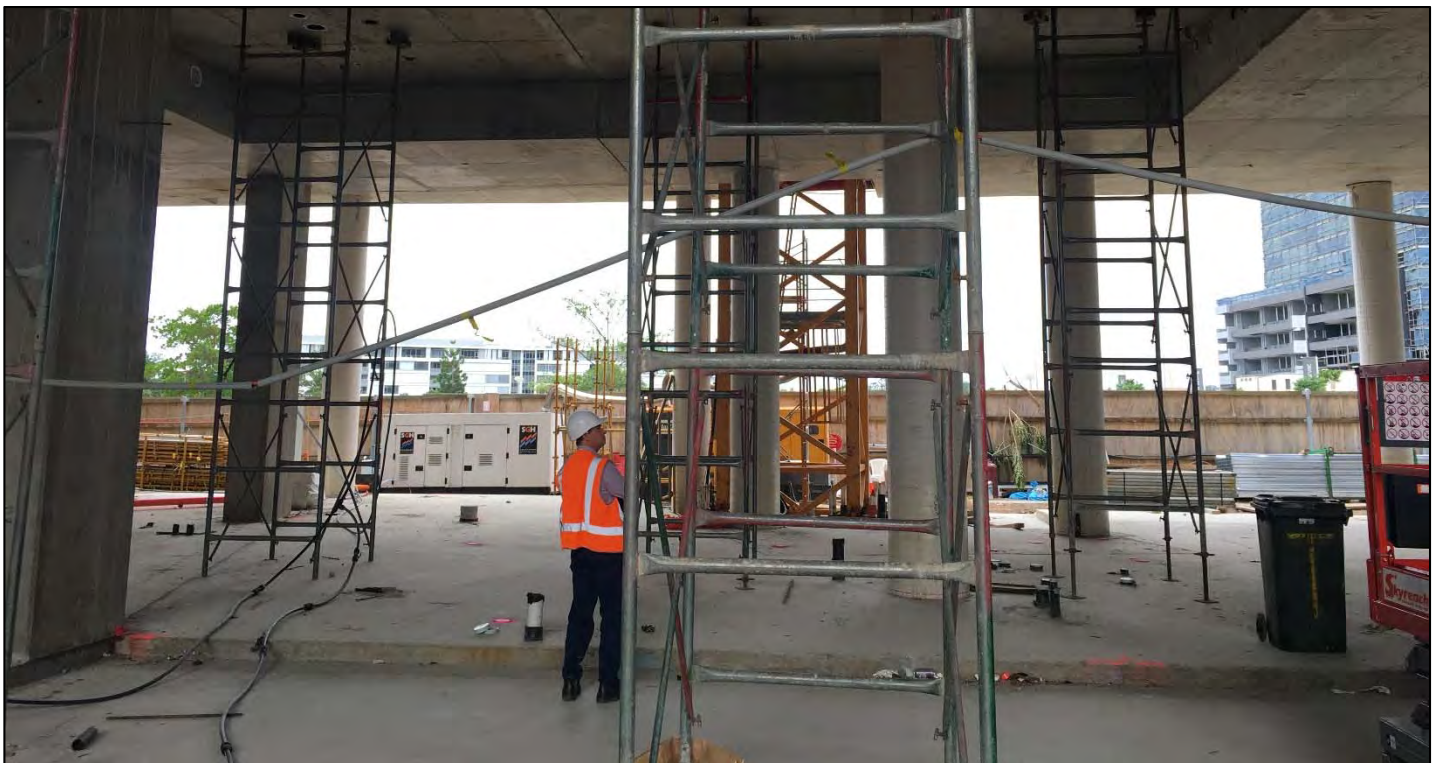


Haven Site: View from Level 2 apartment terraces facing Waterfront Park.

HCAP
DEVELOPMENTS



Haven Site: Easterly view of the Haven tower. The tower includes two jump-forms that will lead the construction progress up to Level 25.



Haven Site: With back-propping removed, the future ground floor retail space is revealed.



Haven Site: With back-propping now removed, the resident lobby area is revealed.



Haven Site: View towards Gasometer from Level 3 Terraces.



Haven Site: Site Photo 14th May 2016