

# Peninsular

R E S I D E N C E S

Construction Update  
19<sup>th</sup> October 2018



**H** **CAP**  
DEVELOPMENTS

**M**  
**MARQUEE**  
DEVELOPMENT  
PARTNERS

## CONSTRUCTION UPDATE – October 2018

# Peninsular

R E S I D E N C E S

Date: 19/10/2018

Prepared by: Marquee Development Partners

Builder/Contractor: Rawcorp

Project Address: 5-7 Peninsular Drive, Surfers Paradise

Construction Commencement Date: 18<sup>th</sup> June 2018

Anticipated Completion Date: September – October 2019

### Construction Update

Despite significant inclement weather over recent weeks, Rawcorp completed a critical milestone today with the transfer slab now poured.

The transfer slab exists between the carpark levels and the apartment levels and contains significantly more concrete and reinforcing than typical slabs, to cater for the transfer of weight between structural columns. The transfer slab is made of approximately 110 ton of steel reinforcing and 1200 tons of concrete.

Rawcorp will now setup formwork for structural columns and are schedule to pour the Level 3 slab by the end of October.

### Completed Activities:

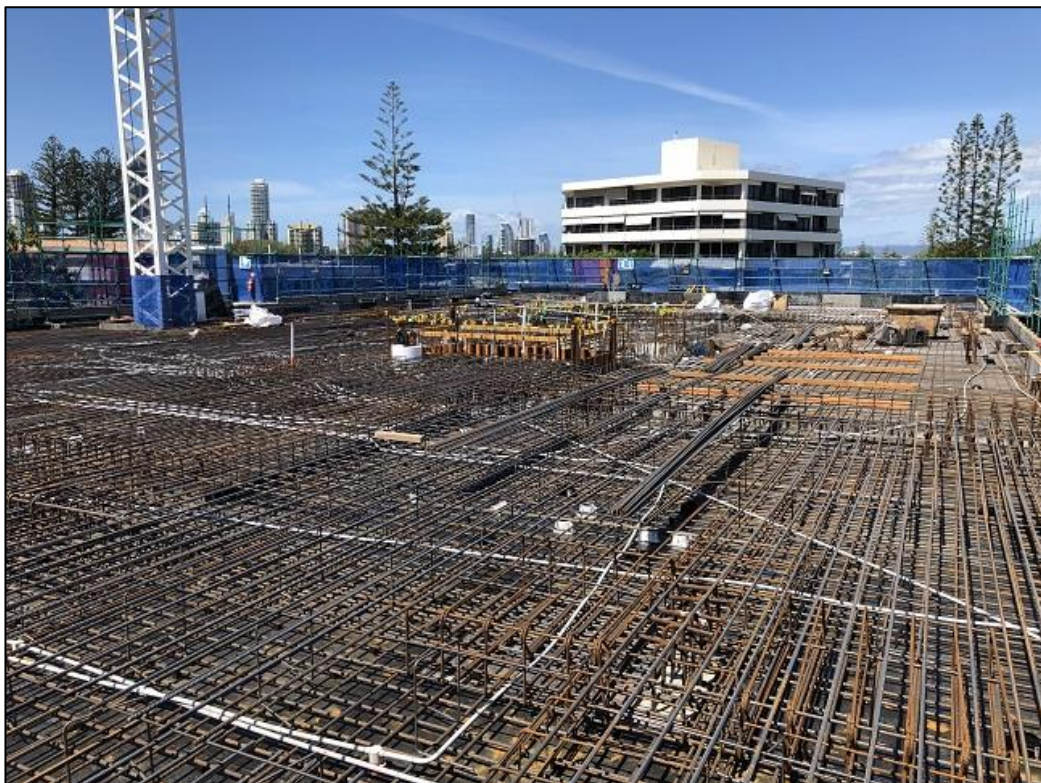
- Reinforcing and concrete pour of transfer slab (Level 2) completed
- Perimeter block walls have been completed on both carpark levels

### Key Activities for August:

- Progress columns and cores for Level 2 apartments.
- Establish formwork and reinforcing for Level 3 slab.
- Pour Level 3 slab.



Aerial view of the Surfers Paradise peninsular showing expansive local parks with broad water access.



Approximately 110 ton of steel reinforcing laid for the transfer slab.



Several concrete trucks are on standby to supply the concrete pumps.



Concrete crews pouring the transfer slab.

CONSTRUCTION UPDATE – October 2018

# Peninsular

RESIDENCES

Project Renders

